

# Community Impact Report

**FY2022-23**

[PECHANGA.COM/COMMUNITY-GIVING](https://pechanga.com/community-giving)



“

*This has always been and will always be our ‘home.’ That guiding principle is also one of the reasons we have invested into our collective future by contributing millions to regional charities and local high schools, from Temecula all the way up to Lake Elsinore.”*

— Mark Macarro

## Table of Contents

---

**1**

Welcome from  
the Tribal Chairman

**2**

Caring for Our Community  
Begins at Home

**4**

Supporting our  
Community

**6**

Supporting Youth  
and Education

**10**

Supporting Environmental  
Sustainability

**12**

Supporting Native  
American Communities

**14**

Community Impact  
with Professional  
Sports Partnerships

**16**

Local Government  
Partnerships

**18**

Program Funding

**20**

Grant Recipients  
for FY 2022-23

Cover photo: Santa Margarita River  
Background photo: Pechanga  
Reservation grasses



**The Great Oak, or Wi'áaşal, is the largest indigenous coast live oak in the Western US. It is over 1,000 years old and, despite its age, produces acorns every two to three years. The Live Oak has supported native peoples for centuries, who ground its acorns into meal and used its roots and branches for protection from extreme weather. Just as our people gleaned nourishment and support from the Live Oak for centuries, we are humbled to extend that support to our neighboring community for years to come. Pechanga is proud to partner with organizations that provide critical services to our region, and to offer tangible support and solutions to help others become self-sufficient and thrive.**

# Giving With Purpose



For more than 10,000 years, the Pechanga people have called the Temecula valley home. Our enduring values of strength, wisdom, longevity, and determination helped our ancestors overcome countless adversities throughout our history. Today, these values shape our commitment to the ideal of helping people become self sufficient through grants, volunteering, in-kind contributions, sponsorships, and partnerships.

## MISSION

We support effective, tax-exempt, 501(c)3 non-profit organizations that share our commitment to helping people become self-sufficient, particularly children, families in need, and those with the fewest resources. Additionally, we value the environment and support nonprofits that provide solutions to the primary causes of climate change.

## GUIDING PRINCIPLES

To achieve the greatest impact with our resources, we focus our giving in the counties of Riverside, Los Angeles, and Orange. These are the areas where our valued Team Members and guests reside, as they make our charitable work possible.

## STRICT FOCUS

- Partner with well-established and sustainable non-profit groups with a history of community involvement and investment.
- Potential partners are expected to conduct their business affairs with integrity, including regular review of financial statements.
- Partners must demonstrate clear and measurable results.

# Welcome from the Tribal Chairman



**O**ur Tribe has called the Temecula Valley home since time immemorial, contributing to the health, vitality, and stewardship of this land we all share. Our ancestors endured and overcame many struggles so that future generations could survive, prosper, and thrive.

Our modern economic journey began in 1995 with the opening of the Pechanga Entertainment Center, employing just 150 people. Today, Pechanga is proud to be one of the largest private employers in Riverside County, generating millions in economic activity that benefits our local communities, the region, and the state of California.

Equally important, the success of tribal gaming has allowed us to give back in meaningful ways. Each year, we invest in local and regional nonprofits that serve our neighbors, strengthen families, and support community members in need.

This report highlights Pechanga's community impact during the 2022–2023 fiscal year. As we look ahead, we remain dedicated to honoring our ancestors' vision by strengthening relationships, building new ones, and sustaining our role as a driving force for the prosperity of our region.

With gratitude,

**Mark Macarro**  
TRIBAL CHAIRMAN



# Caring for Our Community Begins at Home

**Pechanga is proud to host several events which benefit surrounding non-profits from our Valley. We have an amazing team of talented individuals that create our four-diamond resort experience, so it only makes sense to put those talents to use to further boost the health and wellbeing of our immediate community from right here at**



**home. From delicious food festivals, to exciting charity golf tournaments and blood drives, we are proud that our giving comes from and starts at the heart of Pechanga.**

## SUPPORTING HABITAT FOR HUMANITY

Support for Habitat for Humanity provides safe, decent, affordable housing for those in need, creating stability and empowerment in communities. Pechanga hosts several food festivals throughout the year with proceeds benefiting Habitat for Humanity. In addition, players can round up their winnings to donate to Habitat. Pechanga's support over the years has allowed them to complete 226 home repairs and helped over 450 deserving individuals receive shelter.



The Pechanga Charity Golf Tournament has raised \$1.8 million over the past 24 years to benefit organizations that provide vital services to our region, changing lives of at-risk youth, families in crisis, and assisting and empowering our armed forces.



Patrons can round-up their winnings and donate to one of four selected charities at our casino kiosk machines, providing over \$100,000 to worthy local service providers.



Pechanga hosted four blood drives in 2022 in partnership with Life Stream and American Red Cross, receiving enough donations to save up to 1,000 lives.



### HOLIDAY OF HOPE

For six years Pechanga has been honored to host a holiday event to lift the spirit of those that need it most. Over 400 disadvantaged children and families attended the Annual Holiday of Hope. Through this event each family receives an evening of fun, a \$100 gift card for holiday expenses and each child in attendance leaves with an age appropriate gift. Working closely with the local school districts to give back to our communities is a partnership Pechanga is honored to have.



### VETERANS CARE PACKAGES

Pechanga often partners with U.S. Vets to further their mission of helping homeless vets gain residential stability, increase their skill levels and income, and achieve a greater level of self-determination. Five hundred much-needed hygiene kits were assembled to be distributed to veterans in need in Riverside and Inglewood, ahead of Thanksgiving.



### MAKE-A-WISH FOUNDATION

Every coin collected from the water features at Pechanga represents a wish, a chance of good luck, a hope for improved circumstances or outcomes. In partnership with the Make-A-Wish Foundation, these wishes have the power to create hope, renew energy, and provide a child with the strength to fight their critical illness. It can even help pave their path to recovery. A wish impacts everyone who touches it and helps make it a reality. The connection, optimism, inspirational generosity and kindness that surrounds a wish can change hundreds of lives.

# Supporting Our Community

**As the original caretakers of this Valley, the Pechanga People possess firsthand knowledge of the critical services needed to make this community a better place for everyone. As such, funds support a broad array of community programs that help people obtain basic needs, such as food, shelter, and clothing for low-income families. The funds also provide support for essential services for low-income senior citizens, as well as for our military families and veterans.**

## SPECIAL OLYMPICS

For 21 years our Tribe has partnered with local law enforcement to support the Special Olympics. Pechanga began the Annual Torch Run at our facility as well as supported the organization with a \$20,000 donation. The event supports Special Olympics athletes and law enforcement officers as they participate to raise awareness and funds for individuals with intellectual disabilities in the Inland Empire communities.



## MICHELLE'S PLACE

Families battling cancer need all the resources they can get, which is why Pechanga has supported Michelle's Place Cancer Resource Center for the past decade. They provide vital counseling and tangible resources to local families, giving hope and support to all that walk through their doors.

Pechanga partnered with Michelle's Place to help with their Back-To-School Backpack Drive, providing over 75 kids of families battling cancer with supplies for the new school year.



*“Pechanga is more than a donor; Pechanga is family. Their support is essential to the success of our programs, and we are grateful for their support.”*

— Kim Gerrish  
CEO, MICHELLE'S  
PLACE CANCER  
RESOURCE CENTER



## FY22/23 HIGHLIGHTS



### ANIMAL FRIENDS OF THE VALLEY

## \$5,000 Donation

Animal Friends of the Valleys announced that they will break ground on a new low cost spay/neuter clinic adjacent to the existing shelter in Wildomar. Our Tribe supported the expansion with a \$5,000 donation. With the donation they will be able to dramatically increase pet spay/neuter surgeries for community pets as well as shelter animals and, being next door to the shelter will make life much easier for animals, clients, and staff alike.



### MURRIETA ROTARY FIELD OF HONOR

## 14 Years

For 14 years, Pechanga has participated in this signature community project as the official sponsor of the "California Medal of Honor Recipients" section of the field. Funding assists the Murrieta Rotary in providing a wide variety of projects, including scholarships, teacher grants, youth leadership programs, music and speech contests, foster youth and disadvantaged children and special community needs response.



### SUPPORTING SUSAN G. KOMEN FOR OVER 22 YEARS

## \$15,000 Sponsor

Pechanga is a proud supporter of the MORE THAN PINK Walk which is Susan G. Komen's signature fundraising event. Participating as the \$15,000 Team Village sponsor, our Team Members love to come together to help support this extraordinary event. This year, Pechanga assisted Susan G. Komen in raising over \$165,000 to provide research, care and community to those battling breast cancer in our region.

# Supporting Youth and Education

**Pechanga has always placed emphasis on youth and education programs, as the Luiseño culture teaches that the youth are their most treasured natural resource. We believe it is our responsibility to protect, encourage, and nourish them, as someday they will be the guardians of these lands.**

**S**upporting education is crucial for the future success and prosperity of our communities. By investing in education, we are investing in the next generation of leaders, innovators, and problem-solvers. Education provides individuals with the knowledge and skills necessary to succeed in the workforce and contribute to the growth and development of their communities. It also helps to break the cycle of poverty and create opportunities for social mobility. Moreover, education is essential for



fostering critical thinking, creativity, and curiosity, which are essential for personal growth and development. By supporting education, we are investing in the future of our communities and ensuring that they remain strong and prosperous for generations to come.

Since 1998, Pechanga has donated over \$6.4 million to the three public high schools in the Murrieta, Temecula, and Lake Elsinore school districts. By investing in education, we are supporting the next generation of leaders, innovators, and problem-solvers. The funds are allocated by school principals towards academic programs, senior scholarships, athletic program support and equipment, and classroom technology. By supporting education, we are investing in the future of our community and ensuring its strength and prosperity for generations to come.



**Murrieta Mesa High School purchased**

**“The Beast” security cart to help aid in the overall safety of their campus.**



**Temescal Canyon High School purchased**

**several dozen iPad stations to ensure students have the necessary tools to access curriculum and complete coursework on campus.**

## FY22/23 HIGHLIGHTS



### SENIOR SCHOLARSHIPS

## \$64,850 to 114 Students

College scholarships help to open up opportunities for students' future success by providing not only the financial support that can make higher education more accessible and affordable, but also recognition of a student's hard work during their high school tenure and the belief that they will succeed in their higher education endeavors. In 2022, Pechanga awarded scholarships through the Dollars for Scholars Foundation totaling \$64,850 to 114 students.



### SALVATION ARMY "CHILD SPREE"

## 55 Children Outfitted

The Child Spree is a back-to-school clothing drive for children in the Southwest region of Riverside County and is the largest back-to-school event in the area. Each child receives up to \$125 worth of new school clothes, \$25 worth of school supplies, and free books. Thanks to Pechanga's contribution, 55 children are now outfitted with the supplies they need for a successful school year.



### BOYS & GIRLS CLUB OF SOUTHWEST COUNTY

## \$1.9 Million in Support

Since 2005, Pechanga has partnered with the Boys & Girls Clubs of Southwest County to provide a safe environment for before and after-school programs, encouraging youth to realize their full potential. In 2022, Pechanga's total support for the Clubs reached over \$1.9 million.

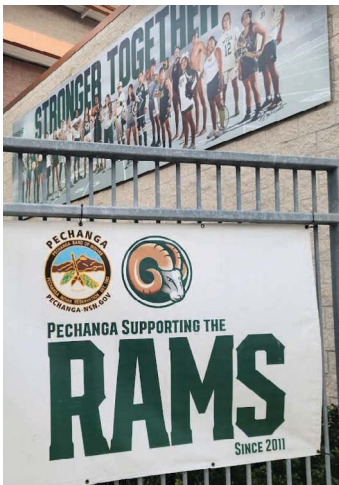
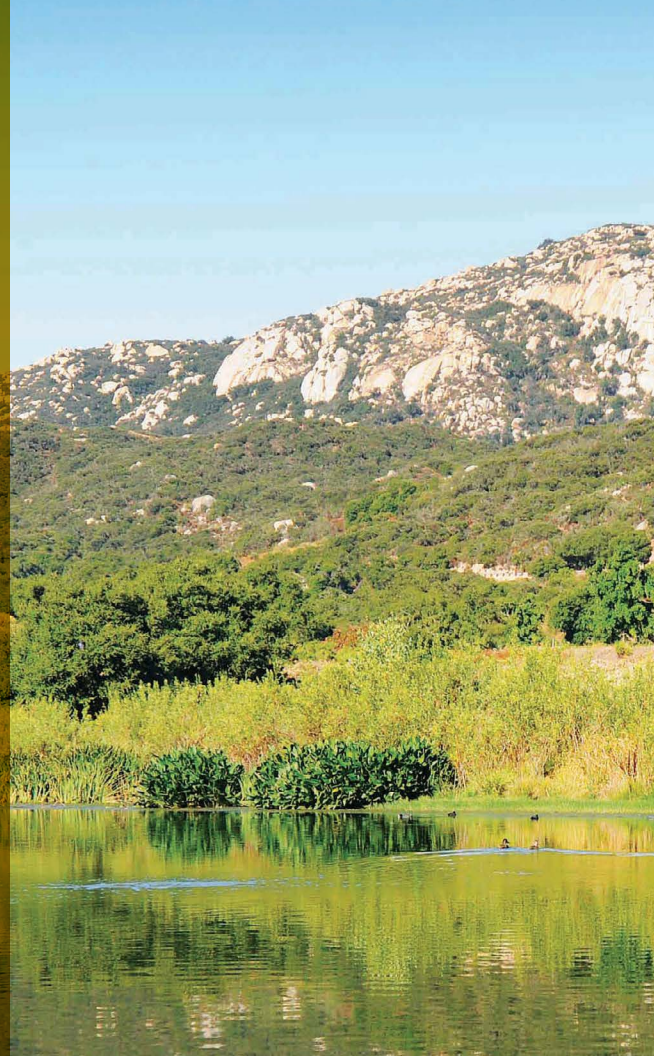
“

*Pechanga’s unwavering dedication to empowering and uplifting youth in our community has had an immeasurable impact on the lives of these children and their families.”*

— **Carly Bennett-Valle**

CHIEF EXECUTIVE OFFICER, BOYS & GIRLS CLUBS  
OF SOUTHWEST COUNTY

Background image: Pu’éska Mountain



Clockwise from top left: Murrieta Mesa High School shares Pechanga’s support on campus; Make-A-Wish plaque in front of Pechanga fountains; Tribal youth participating in InterTribal Sports program; Pechanga’s Holiday of Hope event; Pechanga Team Member volunteers at Salvation Army Child Spree.





Clockwise from top left: Shuttle donation to Los Coyotes Band; La Jolla Tribe receives Thanksgiving turkeys; Tribal Councilwoman Catalina Chacon donates college scholarship to local high school senior; Pechanga Team at Komen Walk.

# Supporting Environmental Sustainability

**In recent years, the need to address the impact of human activity on, and our relationship with, the environment has become more urgent.**

**E**nvironmental sustainability programs can reduce our carbon footprint, protect natural habitats and wildlife, and create economic opportunities. These programs can take many forms, such as recycling, renewable energy, and conservation efforts. By supporting them, we can help protect the planet for future generations.

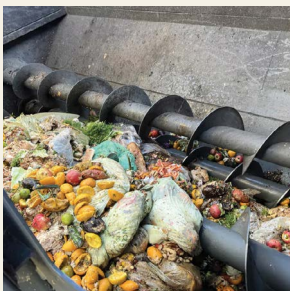
» Pechanga has a recycling services contract with CR&R through May of 2024. They handle all our recycling including paper, plastic, glass, aluminum, metal/steel, baled

cardboard, e-waste and food waste. A robust food waste recycling program sends approximately 10 tons of food scraps for recycling every week. The food waste is turned into compost, biofuel and animal feed.

» Pechanga Western Electric installed 3,670 solar panels to cover the roof of the East Parking Garage. They produce 2,760,000 kilowatt hours or enough to power 225 homes. This power will offset imported power Pechanga takes in from the grid, helping us further increase our self-sufficiency, as well as reduce our carbon footprint.

» Biodegradable and compostable straws are manufactured in the United States and made from certified compostable resin. These are the superior straws in the market and contain all the benefits of traditional petro-based plastic straws all without the environmental harm petroleum-based plastic straws cause our planet. Pechanga provides these straws in all restaurants on property.

» Pechanga Resort Casino has started installing bottle filler units back of house in order to reduce our single use plastic. Departments are providing reusable bottles for team members.



## FY22/23 HIGHLIGHTS



### TERRACYCLE

## Cigarette Waste Recycling

Cigarette butts are the number one thrown out piece of trash in the U.S. Pechanga is doing its part by collecting all cigarette butts from the designated smoking areas outside the casino and hotel and sending them to TerraCycle. The company makes the butts into park benches and other items. It keeps toxic trash out of the landfill and from breaking down into our environment.



### NEW GENERATION PLANT

## Combined Heat and Power

Pechanga has a large cogen plant on its premises. Co-generation produces electricity from the generation of heat. This is found to be 87% more efficient than separate power and heat supplies. Pechanga also captures about 100,000 gallons of water each year. Droplets created by the cogen turbines get saved and used in the system that cools the inside of Pechanga's casino.



### NATURE EDUCATION FOUNDATION AT SANTA ROSA PLATEAU

## Hands-on nature learning

For over 20 years, Pechanga has supported the Santa Rosa Plateau Nature Education Foundation to grow its hands-on environmental programs. These programs are designed to encourage innovative projects that inspire, educate, and empower children and youth to appreciate, preserve, and protect nature. Over the years, the program has evolved to provide new forms of nature education support, including the development of a media strategy that incorporates distance learning videos and a YouTube channel.

# Supporting Native American Communities

**In addition to our own philanthropic efforts, we support fellow Native American tribes by providing basic necessities to those in need.**

**D**espite some Tribes developing stronger economic drivers to help their communities, negative impacts still exist on reservations and in Native American communities. Shockingly, less than 0.5% of philanthropic funding is directed towards Native American Communities. Tribes have a history of providing aid to their own communities to help them become self-sufficient. By working together and supporting one another, tribal governments can make a meaningful difference in the lives of their citizens. We are proud to support our sister tribes when needs arise.



## SCHOLARSHIPS FOR DISADVANTAGED TRIBAL STUDENTS

In 2019, the Pechanga Band of Indians established the Wi'aasal (Great Oak) Scholarship Fund. The scholarship fund was established by Pechanga to assist enrolled members of economically disadvantaged federally recognized tribes in California. In 2022-23, the Tribe provided more than \$2 million to 171 scholars from 45 tribes. Since inception, Pechanga has funded 470 scholarships totaling over \$5.7 million.

**“This scholarship will enhance my nursing education that will directly impact the quality of care that I am able to provide my patients in practice, including being able to communicate with those who are Spanish speaking. Growing up, college was always my goal. To me, graduating from college means that I have overcome all of the obstacles that have come my way since I was just a little girl. Getting a college degree will also mean that I have the opportunity to create the life I have always dreamed of.”**

**— Paige Lyons**  
YUROK TRIBE





### INTER TRIBAL SPORTS, INC.

## Community and Belonging

Sports have been an integral part of tribal communities for centuries, providing not only physical activity but also a sense of community and belonging. They serve as a unifying force for tribal communities, bringing people together and building strong bonds that last a lifetime. Support for these programs ensures that our youth have the opportunity to experience the many benefits of sports and that tribal communities remain strong and united for generations to come.



### NATIVE AMERICAN LAND CONSERVANCY

## Protecting and Restoring

The Native American Land Conservancy protects and restores sacred sites and areas, provides educational programming for Native American youth and the general public, and conducts scientific studies on cultural, biological, and historical resources on sacred lands. Pechanga supports their mission to acquire, preserve and protect Native American sacred lands through protective land management, educational programs, and scientific study.



### GREAT OAK HIGH SCHOOL

## Indigenous People's Club Pow Wow

Supporting the Indigenous People's Club of the neighboring high school is a crucial way for youth from surrounding tribes to connect with and share their cultural heritage with their communities. Their events provide an opportunity for intergenerational learning and sharing of traditions, which can instill a sense of pride and identity in young Native people. By supporting their annual Pow Wow, tribal youth can also develop leadership skills and community engagement, while strengthening relationships with other tribal communities. Ultimately, investing in local youth clubs and events helps ensure the preservation and continuation of Native cultures and traditions for years to come.

*"I just wanted to say thank you so much for the amazing support the Tribe has given to ITS! It means so much and we can't thank you enough!"*

— Isaiah Thompson

EXECUTIVE DIRECTOR, INTER TRIBAL SPORTS, INC.

# Community Impact with Professional Sports Partnerships

Through professional sports partnerships, Pechanga has been able to support local charities and community organizations while also increasing its reach and exposure, further demonstrating our commitment to giving back to the community and supporting local causes through numerous means.

## LOS ANGELES RAMS

The Los Angeles Rams have a long tradition of NFL history in Los Angeles. As partners with Pechanga, they take every opportunity to improve the community. During the holiday season, Pechanga, the Los Angeles Rams, and the Los Angeles Regional Food Bank collaborate to organize a drive-thru food distribution in the SoFi Stadium parking lot, providing assistance to approximately 8,000 people in need.



## LOS ANGELES LAKERS

Hoops for Troops: Every year, Pechanga and the Los Angeles Lakers organize the Hoops for Troops program for active service members throughout Southern California. The program includes basketball clinics coached by Lakers legends such as Robert Horry and AC Green, among others. After the clinics, the service members and their families receive tickets to the evening's game and create memories that they will cherish forever.

Holiday of Hope: Each year, Lakers Legends join us for the Holiday of Hope event hosted by Pechanga.



## FY22/23 HIGHLIGHTS



### LOS ANGELES CHARGERS

## 200 bikes, helmets and locks

The Chargers have always been a popular team in the Temecula area, and now their fandom extends throughout Southern California and beyond. The partnership between Pechanga and the Chargers helps to increase the popularity of both names. However, it is the community efforts made possible by this partnership that bring real strength to those in need. One such effort is the annual “Bikes for Kids” event. Each year, Pechanga joins forces with the Los Angeles Chargers to give away 200 bikes, helmets, and locks to children in need in the Inglewood area just before the December holidays.



### UNIVERSITY OF SOUTHERN CALIFORNIA

## \$200,000 annual donation

In the fall of 2021, Pechanga became the official resort and casino of the USC Trojans, as well as an official partner of USC Athletics. This partnership is unique among California casinos and tribes, as it includes an educational alliance. Pechanga has committed to donating \$200,000 annually to help students achieve their higher education goals.



### LOS ANGELES ANGELS

## Partner since 2005

Pechanga sponsors the all-American game of baseball with the Los Angeles Angels and has been one of the team’s longest standing partners, since 2005. The two also collaborate on annual all-star player appearances at Pechanga Resort Casino, and programs benefiting local charities such as the Angels Baseball Foundation and the Tim Salmon Foundation.

# Local Government Partnerships

Each year, the Pechanga Band of Indians provides more than \$2 million to local governments and agencies to support local law enforcement services, fire protection, road improvements, and more. Over the years, the Tribe has provided the City of Temecula and the County of Riverside more than a total of \$55 million for a variety of services and infrastructure projects including the Temecula Parkway/I-15 off-ramp, widening of Pechanga Parkway, and the addition of an auxiliary on the I-15 between Temecula Parkway and Rancho California Road.



French Valley Parkway off-ramp project



Funding supports Temecula Fire Protection



Funding supports local law enforcement services



I-15N Auxiliary Lane between Temecula Parkway and Rancho California Road

# Program Funding

---

---

THE TOTAL GIVING FOR FY2022-23 WAS:

**\$6,387,357**

---

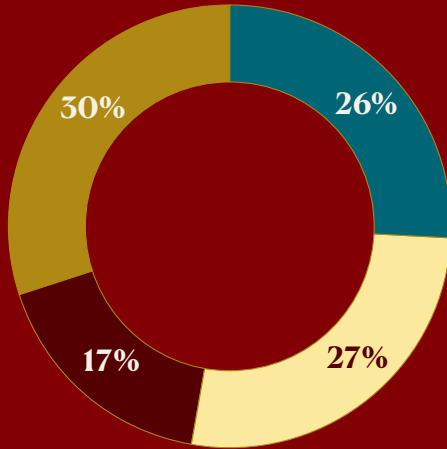
---

**The Pechanga people have lived in the Temecula Valley since time immemorial. Our valley and our original lands have always provided our people with all that we need to thrive. There was a time, however, when those living on the reservation relied upon the generosity of the surrounding community to help make ends meet. The Tribe has never forgotten that support, and with an economic foundation upon which to now build and plan, our people are drawing on our traditions of self-reliance and lasting progress to ensure the Tribe and our community have the resources they need to thrive and become self-sufficient.**

Background photo: Kichas on the Journey at Pechanga Golf Course

COMMUNITY SUPPORT

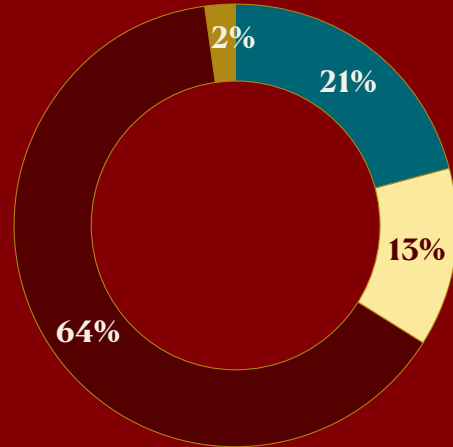
\$509,057



- Safety/Military
- Health Causes
- Other
- Food & Shelter

YOUTH SUPPORT

\$560,648



- Welfare
- Character Development
- Education
- Recreational Sports

TRIBAL COMMUNITY

\$3,991,746

Support for our neighbor Tribes and organizations that serve Native American communities helps strengthen our people, preserve our culture, and secure a self-sustainable future for all.

CIVIC PARTNERSHIPS

\$1.2 million

Pechanga takes an active role in the life of our community. By forming partnerships and building relationships with local jurisdictions and community associations, we foster an ethic of reciprocity and a culture of collaboration for the betterment of our tribe and our neighbors.

ENVIRONMENT

\$15,600

Caring for our environment is of utmost importance for Pechanga. Supporting organizations who are raising awareness about environmental issues and advocating for the protection and conservation of our planet is one of the ways we are protecting our land for the generations to come.

# Grant Recipients for FY2022-23

A.B. Linton Charitable Foundation  
Ability First  
Agua Caliente Band of Cahuilla Indians  
Alisa Ann Ruch Burn Foundation  
All Tribes in Recovery, Inc  
American Cancer Society, Inc  
American Indian Chamber of Commerce  
American Legion Post 132  
American Red Cross - Riverside  
Anaheim Family YMCA  
Angels Gate Cultural Center  
Animal Friends of the Valleys  
Armed Services YMCA Camp Pendleton  
Asian Pacific Community Fund  
Assistance League of Orange  
Assistance League of Pomona Valley  
Assistance League of Riverside  
Back Bay Therapeutic Riding Club  
Big Brothers Big Sisters  
Bonita Canyon PTA  
Boy Scouts of America  
Boys & Girls Club of Menifee  
Boys & Girls Clubs of Southwest County  
Boys & Girls Clubs of Tustin  
Braille Institute  
Buena Park Police Department  
California Capitol Network  
California Family Life Center  
California State Firefighter Association  
California State University San Marcos  
California Tribal Business Alliance  
California Tribal Families Coalition  
Camp Del Corazon  
Canyon Lake Family Matters  
Catching the Dream Native American  
College Scholarships  
Chaffey College Foundation  
Chaparral High School  
Charity for Charity  
Child & Family Center  
Children Striving Together  
Children's Benefit League  
CHP 685 Squad Club-1199 Foundation  
Cody J. Waters Foundation  
Cole Canyon Elementary School P.T.C.  
Community Mission of Hope  
Concern Foundation  
Cops 4 Kids & Communities  
Council on Aging - Orange County  
Crime Survivors, Inc.  
Cystic Fibrosis Foundation - LA Chapter  
Delhi Center  
Discovery Science Center of Los Angeles  
Dream Center Lake Elsinore  
Economic Development Coalition  
Elsinore High School  
Elsinore Valley Champions  
Special-Needs Baseball  
Empty Cradle  
Fairfield Family YMCA  
Feeding America Riverside  
San Bernardino  
Friendly Center  
Friends of Families  
Friends of Weaver  
Genesis Recovery Inc.  
Girl Scouts of San Geronio  
Girls Inc. of Orange County  
Great Oak High School  
Green Acres Interactive Therapy, Inc  
Habitat for Humanity Inland Valley  
Harry's Heroes Foundation  
Helping Our People in Elsinore  
Hemet Hospice Volunteers  
Hospice of the Valleys  
Human Options  
I Am ALS  
Impact Southwest Riverside  
Indian Land Tenure Foundation  
Inland Empire Community Foundation  
Inner-Tribal Treatment Facility  
Inter-Tribal Sports  
Jacob's House  
Janet Goeske Foundation  
JDS Creative Academy  
Junior Achievement of Orange County  
Koinonia Foster Homes  
Kure It Cancer Research  
La Jolla Band of Luiseno Indians  
La Posta Band of Mission Indians  
Lake Elsinore Chamber of Commerce  
Lakeside High School  
Lakewood Christian School Foundation  
Lamas Housing Project  
Las Flores Elementary School PTA  
Little Eagle Free, Inc  
Los Angeles Fire Dept Foundation  
LPGA Amateur Golf Association  
Make-A-Wish Orange County  
Maria's Closet  
Marine Toys for Tots  
Maryam Parman Foundation  
for Injured Children  
Mater Dei High School  
Maternal Mental Health Now  
Meals on Wheels of Long Beach  
Medicine Wheel Ride  
Menifee Girls Softball  
Menifee Pony Baseball  
Menifee Valley Chamber of Commerce  
Menifee Valley Community Cupboard, Inc  
Michelle's Place Cancer  
Resource Center  
MilVet, Inc  
Monte Vista Elementary PTA  
Morongo Band of Mission Indians  
Mothers Against Drunk Driving  
Murrieta Canyon High School  
Murrieta Mesa High School  
Murrieta National Little League  
Murrieta Police Officers' Association  
Murrieta Pop Warner League  
Murrieta Valley High School  
National Federation of Filipino American  
Associations, Greater Los Angeles  
National MS Society  
Native American Land Conservancy  
Native Riders  
Neighborhood Healthcare  
New Horizons  
Oak Grove Center  
Operation Safe House  
Orange County Fire Authority  
Benevolent Association  
Orange County Traffic  
Officers' Association



Ortega High School  
Pacific Heart Lung & Blood Institute  
Paloma Valley High School Baseball  
Placentia Police Department  
Canine Foundation  
Professional Women's Roundtable  
Project Angel Food  
Project T.O.U.C.H.  
Rady Children's Hospital Foundation  
Rancho Vista High School  
Rez Classics  
Rez Riders  
Riverside County Coalition for  
Alternatives to Domestic Violence  
Riverside County Deputy Sheriff  
Relief Foundation  
Riverside County Office of  
Education Foundation  
Riverside County Professional  
Firefighters Benevolent Fund  
Riverside Meals on Wheels, Inc  
Riverside University Health System  
Rotary Club of Menifee  
Rotary Club of Murrieta  
Rotary Club of Temecula  
Round Meadow Parent  
Faculty Association  
Safe Alternatives for Everyone  
Saint Jeanne De Lestonnac  
Catholic School  
Salvation Army Murrieta  
San Bernardino County Sheriff's  
Employees' Benefit Association (SEBA)

San Gabriel Valley Chinese  
Cultural Association  
San Manuel Band of Mission Indians  
Santa Ana College  
Santa Rosa Band of Cahuilla Indians  
Santa Rosa Plateau Foundation  
Santa Ynez Band of Chumash Indians  
Science of Sport  
Second Harvest Food Bank  
of Orange County  
Sgt. Clinton K. Ruiz Memorial Foundation  
Shakespeare in the Vines  
Smiles for Seniors Foundation  
Soboba Foundation  
SoCal Aces Baseball Organization  
SoCal Rodeo Boosters  
Southwest Soccer Club, Inc  
Southwestern Association for  
Indian Arts (SWAIA)  
Special Needs Network, Inc  
Special Olympics Southern  
California - Inland Empire Region  
St. Vincent Meals on Wheels/ St. Vincent  
Senior Citizen Nutrition Program  
Susan G. Komen  
Sycuan Band of Kumeyaay Indians  
Tachi Yokut Tribe  
Talk About Curing Autism (TACA)  
Temecula Creek Inn Women's Golf Club  
Temecula Elementary School PTA  
Temecula Sunrise Rotary  
Temecula Valley Chamber of Commerce  
Temecula Valley Charter School

Temecula Valley High School  
Temecula Valley Little League  
Temecula Valley Pop Warner  
Cheer & Football  
Temecula Youth Baseball  
Temescal Canyon High School  
The Eli Home, Inc  
The Lopez Foundation  
TKO Youth Foundation  
TMCA of Orange County  
Toward Maximum Independence  
Tunnel to Towers Foundation  
U.S. Vets  
V.I.P. Tots  
Veterans Supplemental  
Support Network  
Victory Outreach Temecula Valley  
Viejas Band of Kumeyaay Indians  
Vietnamese American  
Arts & Letters Association  
Vista Murrieta High School  
Voices for Children  
Walking Shield, Inc  
Warfighter Made  
Waves Project, Inc  
Western Riverside Council  
of Governments  
Westpark Elementary PTA  
Wolves Basketball  
Women's Transitional Living Center, Inc  
Woodcraft Rangers  
Wyland Foundation  
Yonsei Basketball Association

“

*With Riverside County being our newest area with a physical health service location, the Pechanga Tribe's incredible vision and generosity will allow us to provide comprehensive and coordinated mental health services, and to help more children in their own neighborhood.”*

— **Dr. Gail Knight**, RADY CHILDREN'S HOSPITAL SENIOR VP AND CHIEF MEDICAL OFFICER



**45000 PECHANGA PARKWAY  
TEMECULA, CA 92592**

[PECHANGA.COM/COMMUNITY-GIVING](https://PECHANGA.COM/COMMUNITY-GIVING)